

IPUMP SCHEMATICS

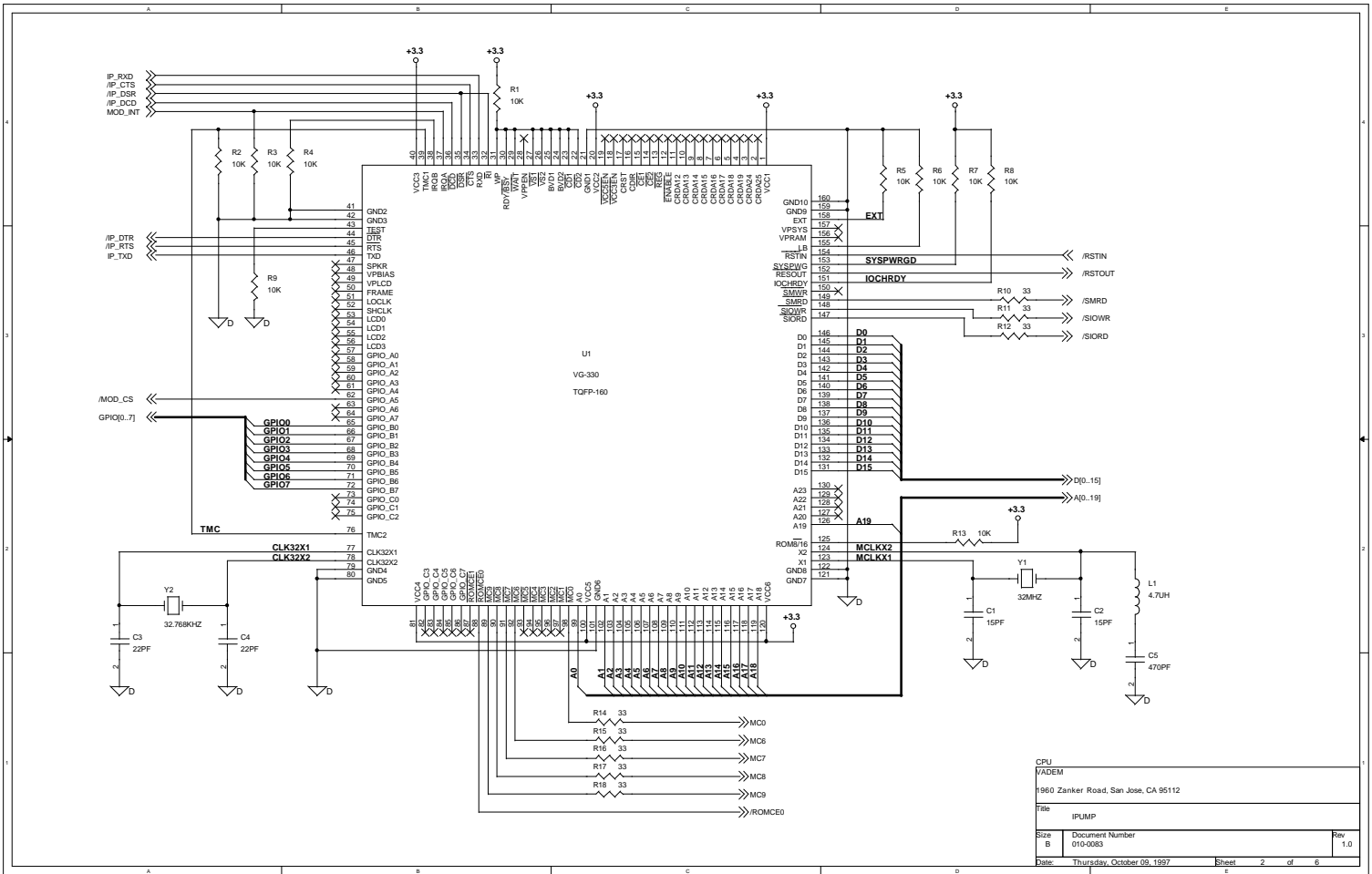
UNLESS OTHERWISE NOTED:

1. ALL RESISTOR VALUES ARE IN OHM, 5%, 1/10W
2. ALL CAPACITOR VALUES ARE IN UF, 20%, 10V
3. ALL INDUCTOR VALUES ARE IN UH,10%

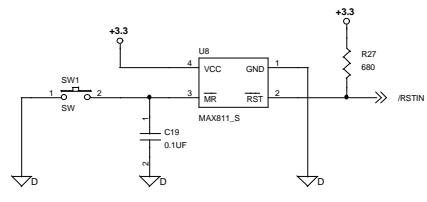
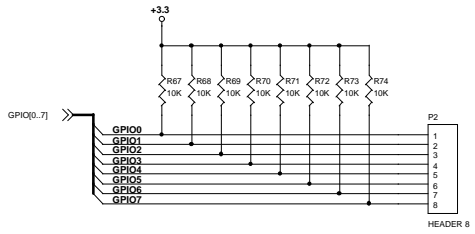
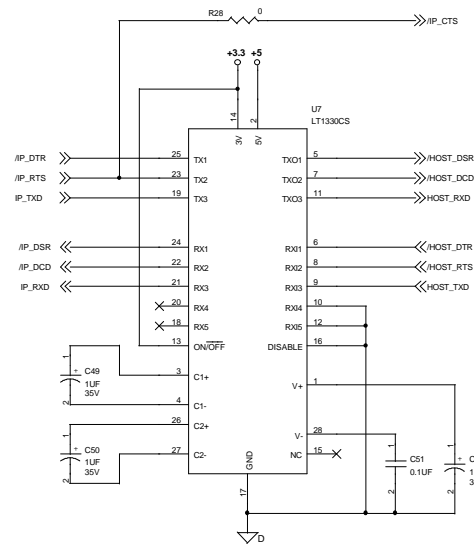
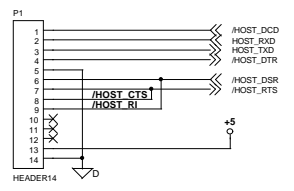
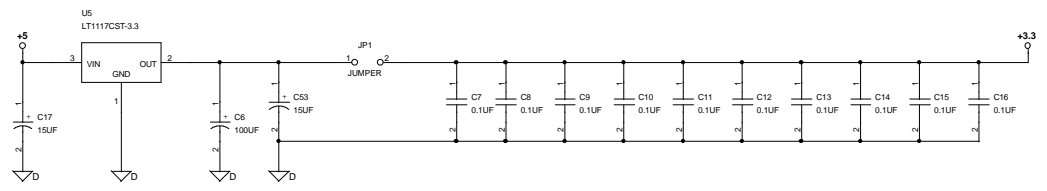
The following schematics are provided as a reference design.
Vadem assumes no responsibility for final system design.
The system designers are responsible for meeting all
applicable FCC and/or UL regulations.

Thuan Luong

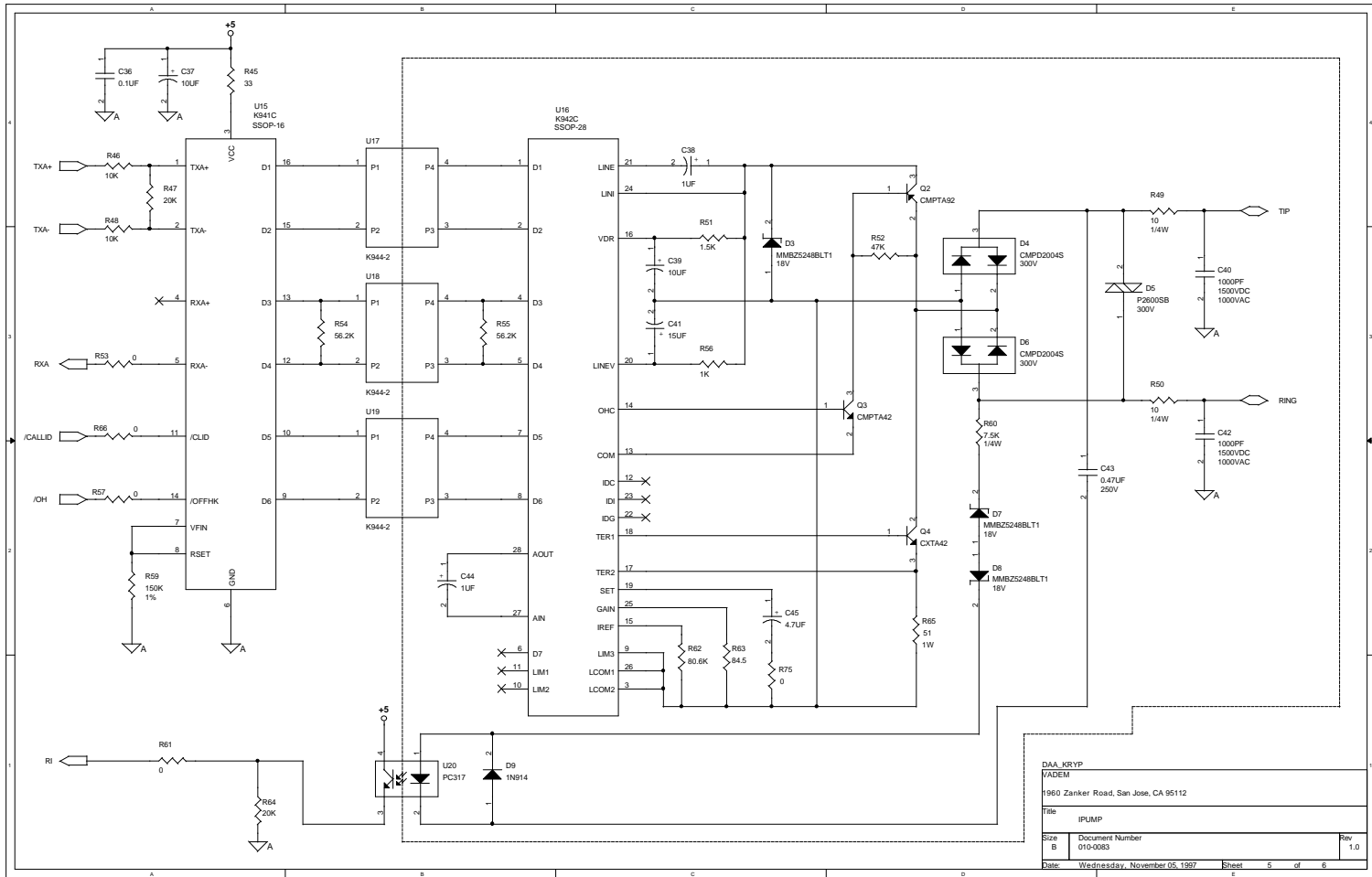
IPUMPTOP		
VADEM		
1960 Zanker Road, San Jose, CA 95112		
Title		
IPUMP232		
Size	Document Number	Rev
B	010-0083	1.0
Date	Thursday, October 09, 1997	Sheet 1 of 6



CPU	
VADEM	
1960 Zanker Road, San Jose, CA 95112	
Title	
IPUMP	
Size	Document Number
B	010-0083
Date	Thursday, October 09, 1997
Sheet	2 of 6
Rev	1.0



MISC		
VADEM		
1960 Zanker Road, San Jose, CA 95112		
Title		
IPUMP		
Size	Document Number	Rev
B	010-0083	1.0
Date	Thursday, October 09, 1997	Sheet 6 of 6



DAA_KRYP
 VADEM
 1960 Zanker Road, San Jose, CA 95112
 Title IPUMP
 Size B Document Number 010-0083 Rev 1.0
 Date Wednesday, November 05, 1997 Sheet 5 of 6