

VG-469

REFERENCE DESIGN #5

DRIVE BAY IMPLEMENTATION

ONE SLOT LOCAL
ONE SLOT REMOTE

5V ISA VCC ONLY

EXTERNAL VOLTAGE SENSE

DMA

ISA BOARD

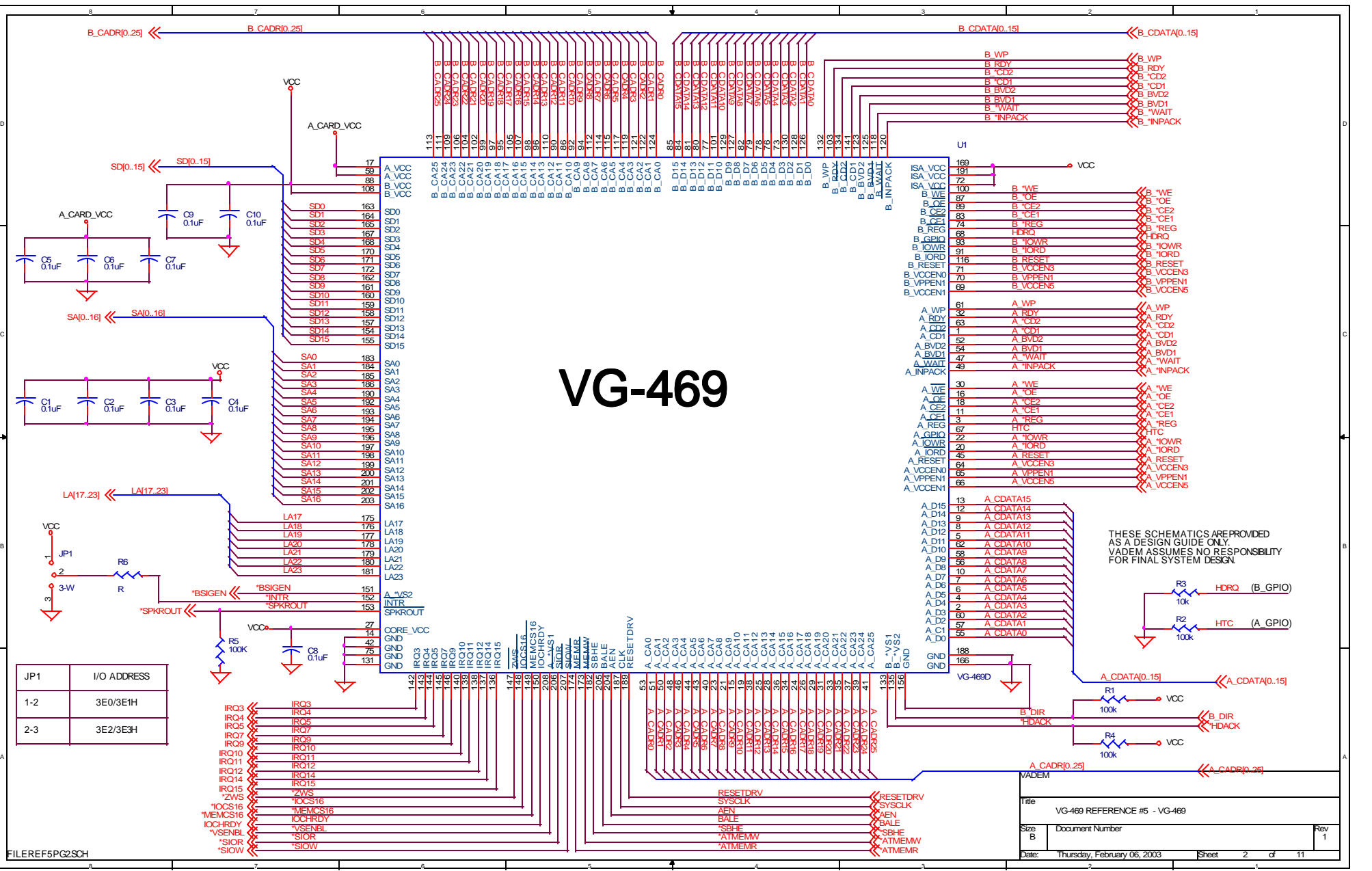
LINK
REFSPG2SCH
REFSPG3SCH
REFSPG4SCH
REFSPG5SCH
REFSPG6SCH
REFSPG7SCH
REFSPG8SCH
REFSPG9SCH
REFSPG10SCH
REFSPG11SCH

These schematics are provided as a design guide only.
Vadem assumes no responsibility for final system design.

FILE=469REF_5SCH

| | | |
|------------------------------------|-----------------|-------|
| VADEM | | |
| Title VG-469 REFERENCE DESIGN #5 | | |
| Size B | Document Number | Rev 1 |
| Date: Wednesday, December 08, 1999 | Sheet 1 | of 11 |

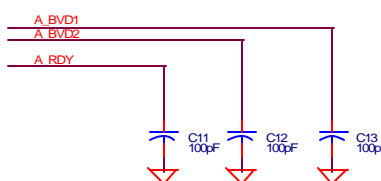
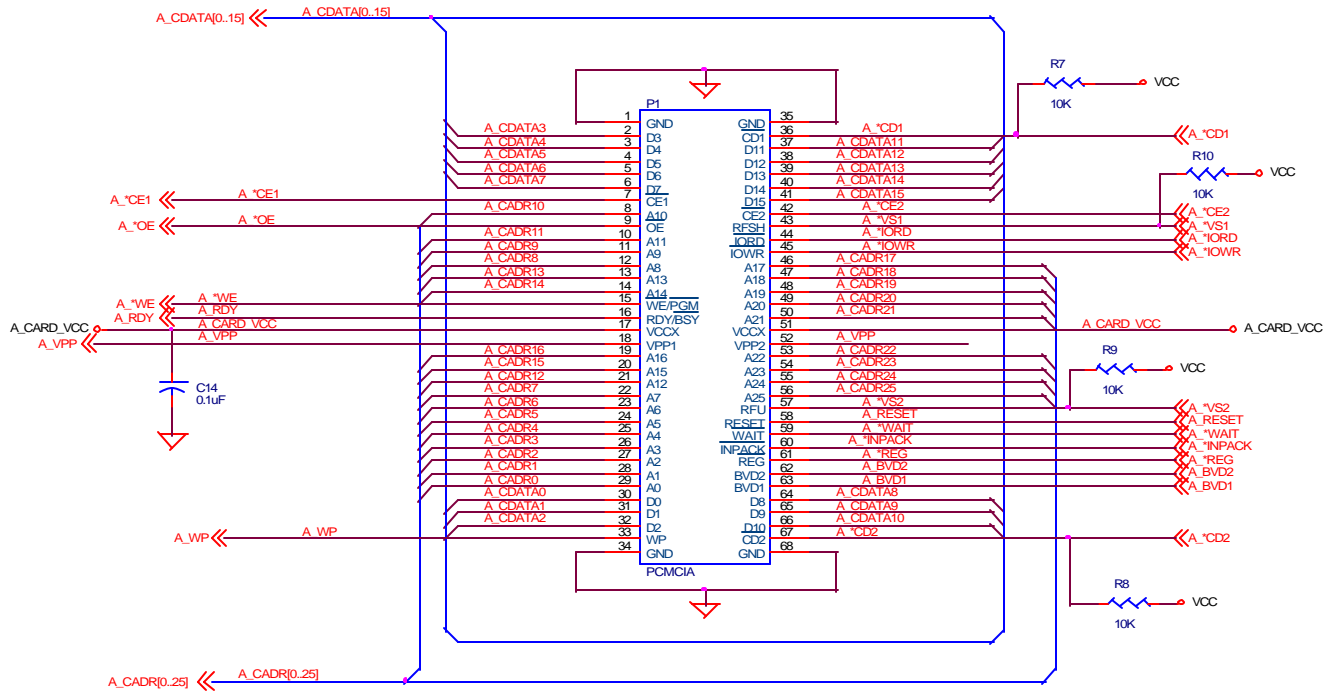
VG-469



THESE SCHEMATICS ARE PROVIDED AS A DESIGN GUIDE ONLY. VADEM ASSUMES NO RESPONSIBILITY FOR FINAL SYSTEM DESIGN.

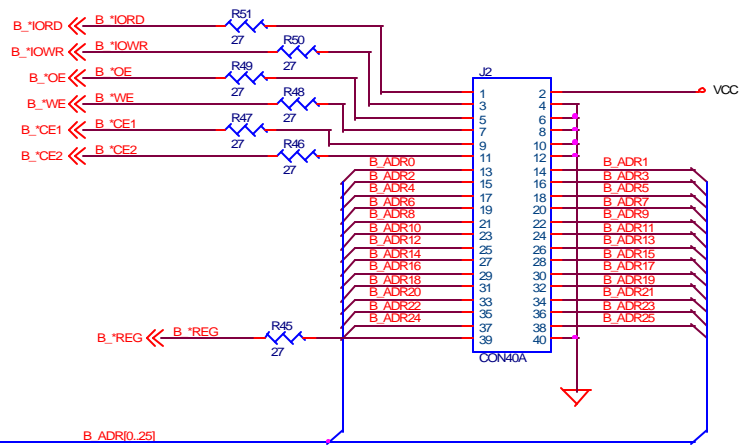
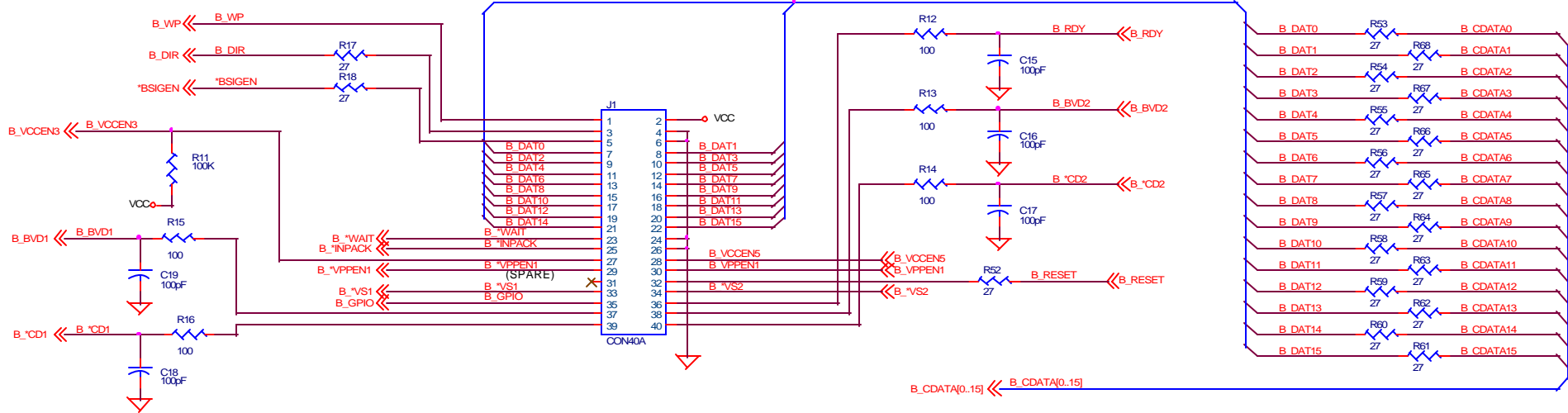
| JP1 | I/O ADDRESS |
|-----|-------------|
| 1-2 | 3E0/3E1H |
| 2-3 | 3E2/3E3H |

| | | | |
|-------|-----------------------------|------------------------------|---------|
| Title | | VG-469 REFERENCE #5 - VG-469 | |
| Size | B | Document Number | |
| Date: | Thursday, February 06, 2003 | Sheet | 2 of 11 |
| Rev | 1 | | |



| | | |
|--|-----------------|----------|
| VADEM | | |
| Title VG-469 REFERENCE #5 - PCMCIA SLOT A | | |
| Size B | Document Number | Rev 1 |
| Date: Wednesday, December 08, 1999 | Sheet 3 | of 11 |

These schematics are provided as a design guide only.
Vadem assumes no responsibility for final system design.



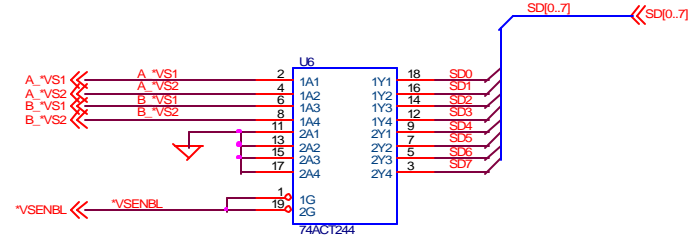
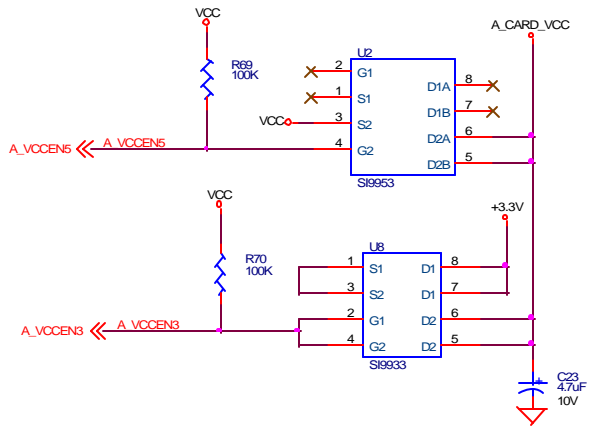
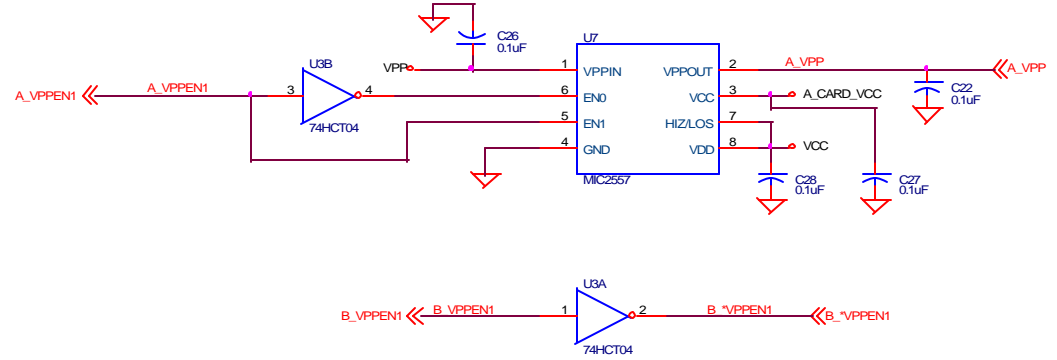
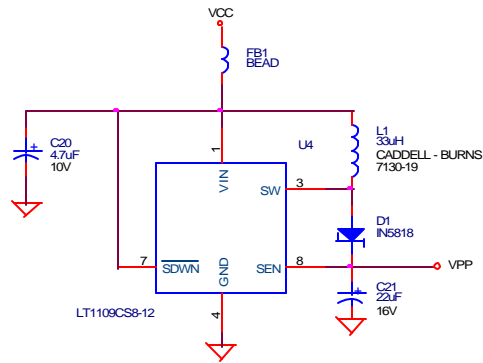
B_CADR[0..25] << B_CADR[0..25]

B_ADR[0..25]

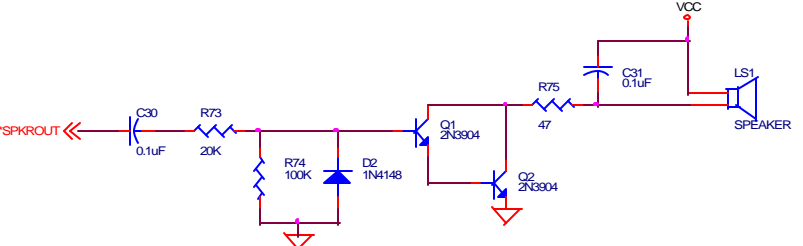
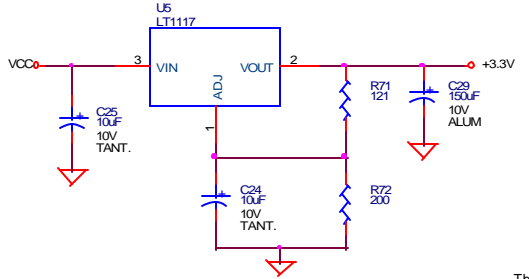
These schematics are provided as a design guide only. Vadem assumes no responsibility for final system design.

FILE=REF5PG4SCH

| | | |
|---|-----------------|----------|
| VADEM | | |
| Title VG-469 REFERENCE #5 - CABLE CONNECTORS | | |
| Size B | Document Number | Rev 1 |
| Date: Thursday, February 06, 2003 | Sheet 4 | of 11 |



EXTERNAL VOLTAGE SENSE

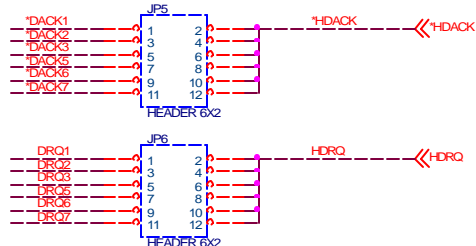


These schematics are provided as a design guide only. Vadem assumes no responsibility for final system design.

| | | |
|--|-----------------|--------|
| VADEM | | |
| Title: VG-469 REFERENCE #5 - POWER CONTROL | | |
| Size: B | Document Number | Rev: 1 |
| Date: Thursday, February 06, 2003 | Sheet: 5 | of 11 |

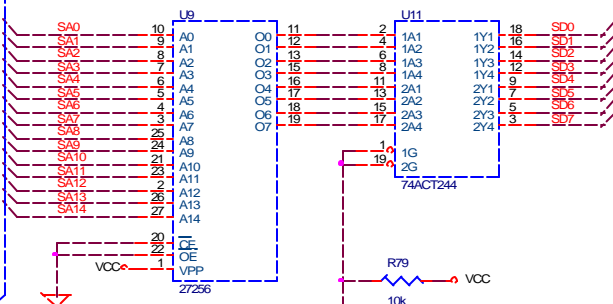
NOTE:

- 1: THE BOOT ROM OPTION HAS BEEN INCLUDED FOR SYSTEMS THAT WILL BOOT FROM A PCMCIA CARD. FOR SYSTEMS THAT DO NOT REQUIRE BOOTING FROM A PCMCIA CARD, THE COMPONENTS WITHIN THE DASHED LINE MAY BE DELETED.
- 2: JPS AND JP6 ARE USED TO SELECT THE DMA CHANNEL AS AN OPTION. THE DESIGNER CAN HARDWIRE A SINGLE DMA CHANNEL OR PROVIDE FEWER CHOICES FOR THE DMA CHANNEL.

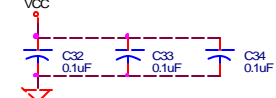
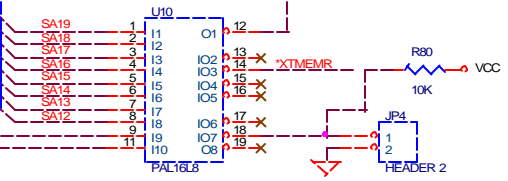
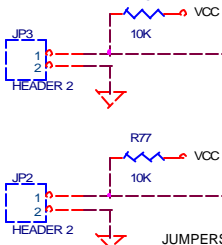
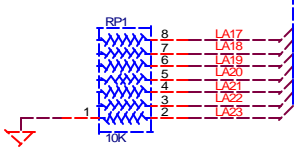
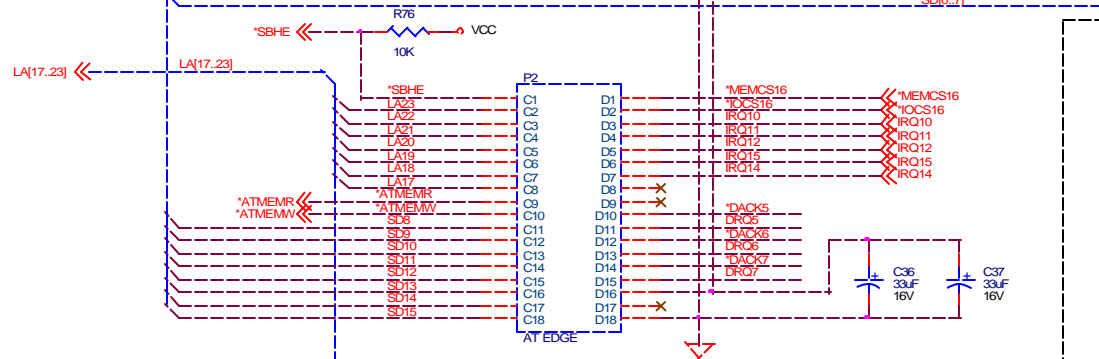
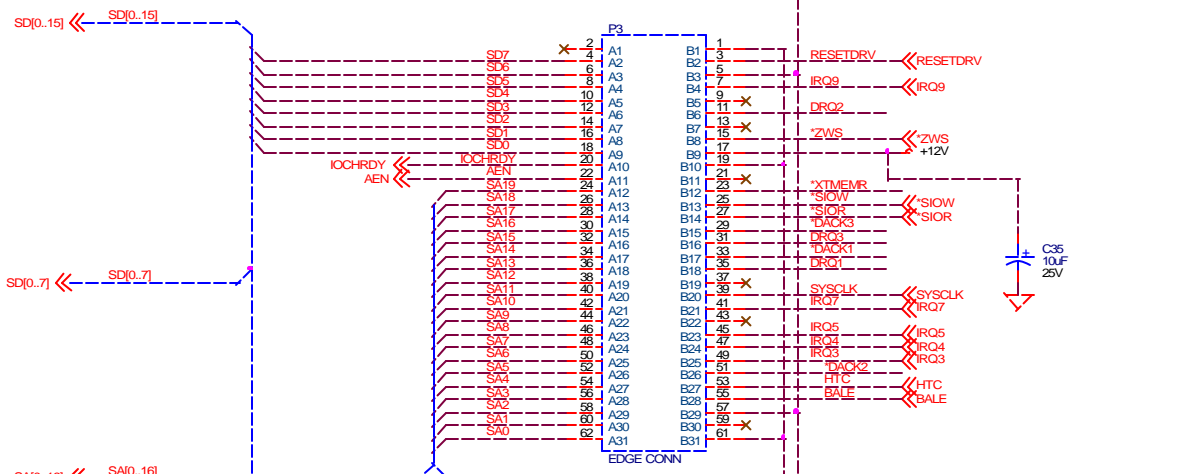


These schematics are provided as a design guide only. Vadem assumes no responsibility for final system design.

BOOT ROM OPTION



| | | | |
|-------|-----------------------------|-------------------------------------|---------|
| Title | | VG-469 REFERENCE #5 - ISA INTERFACE | |
| Size | B | Document Number | |
| Date: | Thursday, February 06, 2003 | Sheet | 6 of 11 |
| Rev | 1 | | |



VG-469

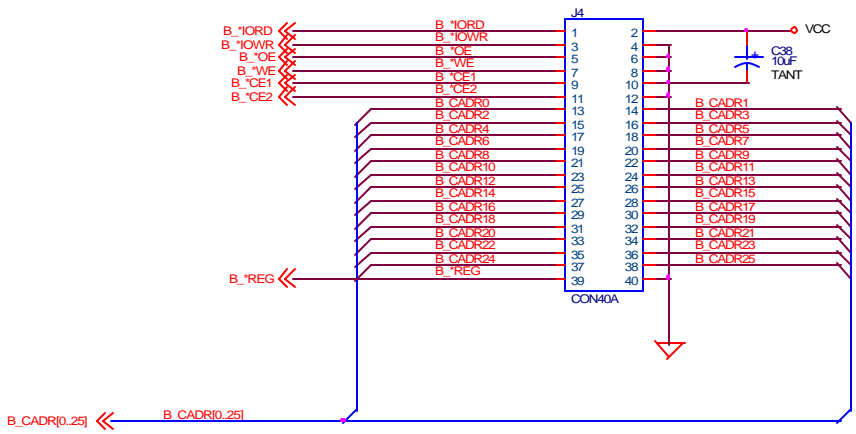
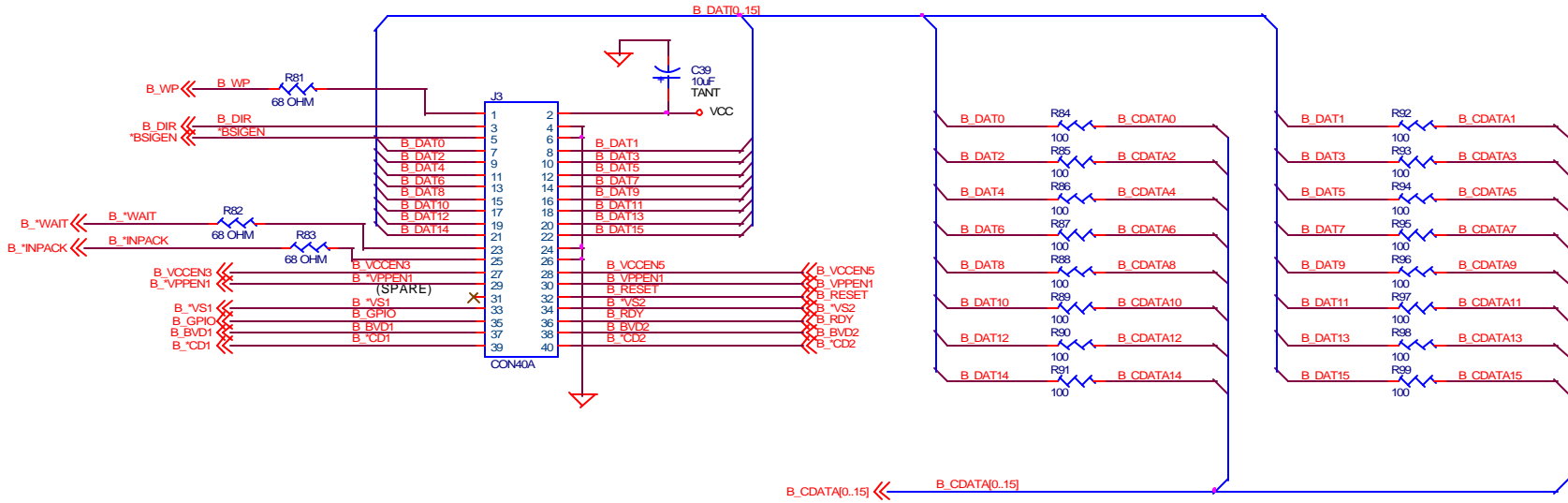
REFERENCE DESIGN #5

DRIVE BAY

These schematics are provided as a design guide only.
Vadem assumes no responsibility for final system design.

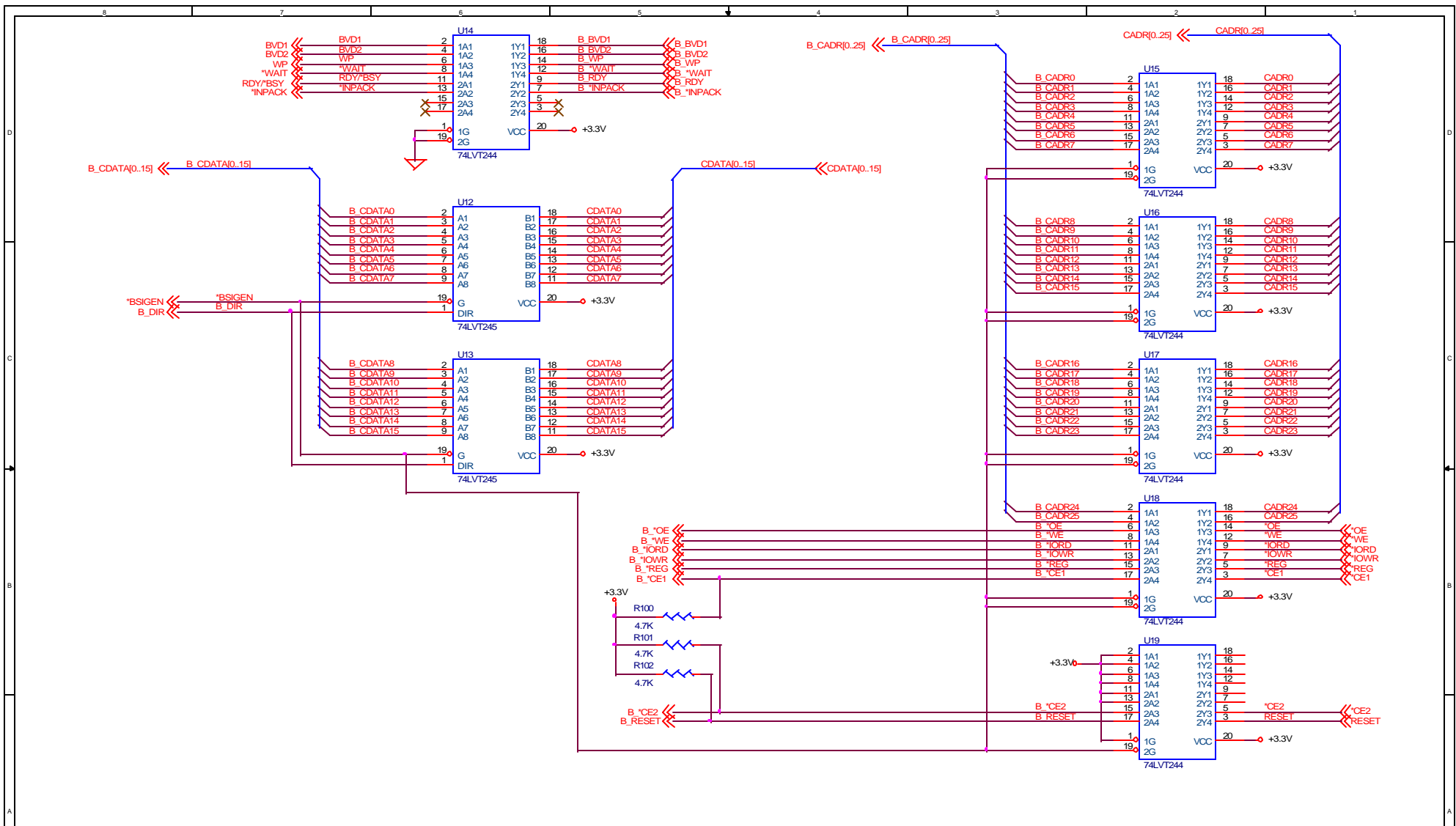
FILE=REF5PG7.SCH

| | | |
|---|-----------------|-------|
| VADEM | | |
| Title VG-469 REFERENCE #5 - DRIVE BAY BOARD | | |
| Size B | Document Number | Rev 1 |
| Date: Wednesday, December 08, 1999 | Sheet 7 | of 11 |



These schematics are provided as a design guide only.
 Vadem assumes no responsibility for final system design.

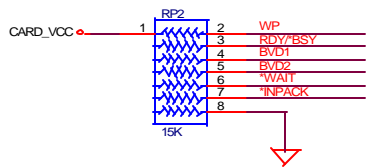
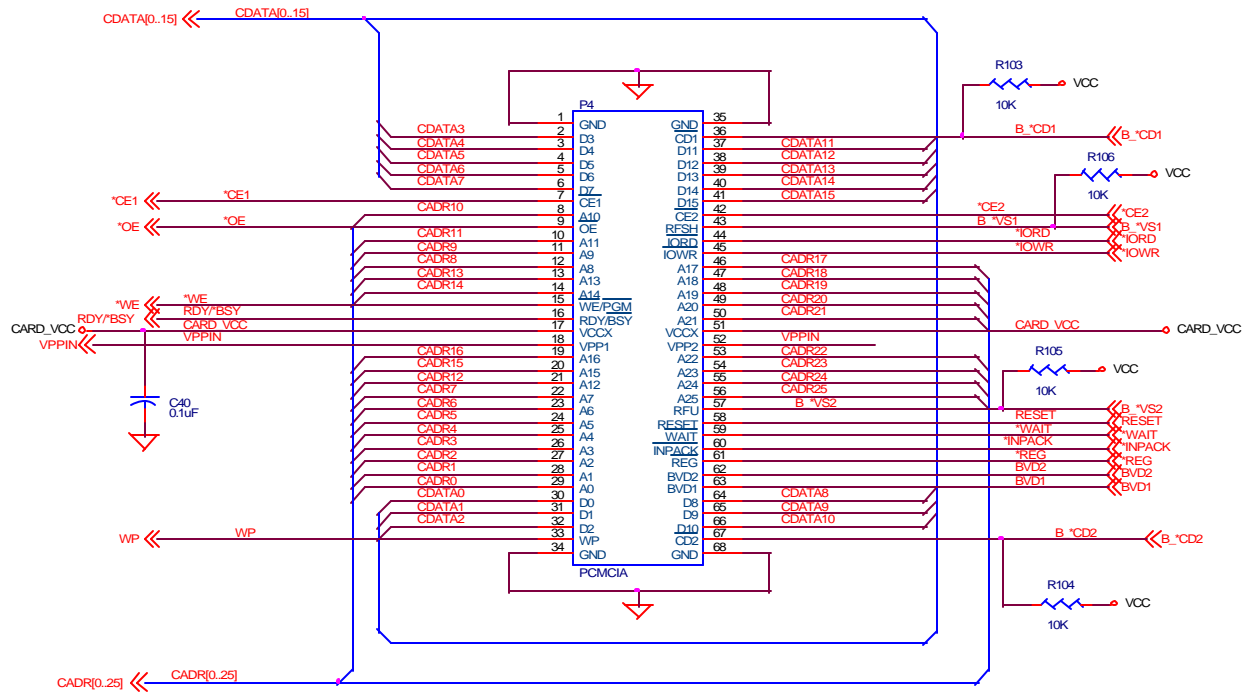
| | | |
|---|-----------------|--------|
| VADEM | | |
| Title: VG-469 REF #5 DRIVE BAY - CABLE CONNECTORS | | |
| Size: B | Document Number | Rev: 1 |
| Date: Thursday, February 06, 2003 | Sheet: 8 | of 11 |



These schematics are provided as a design guide only.
Vadem assumes no responsibility for final system design.

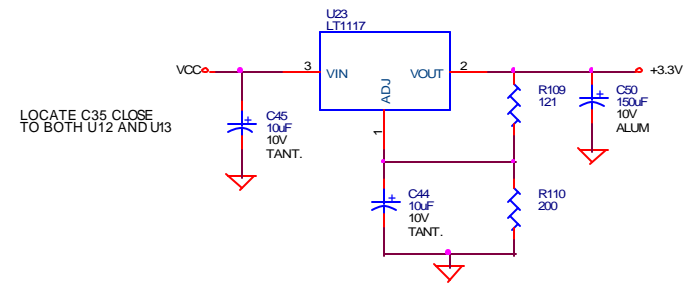
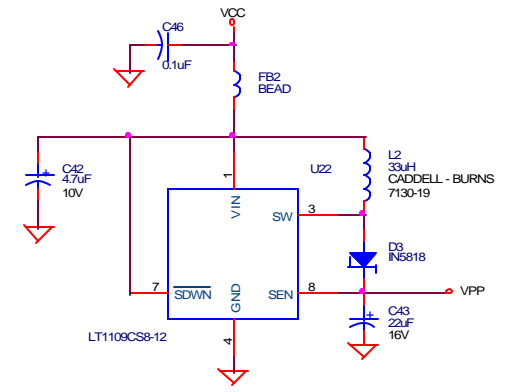
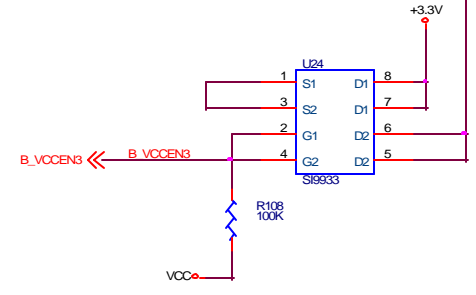
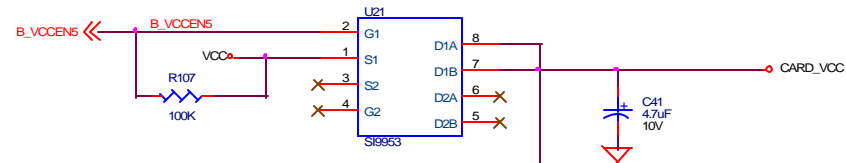
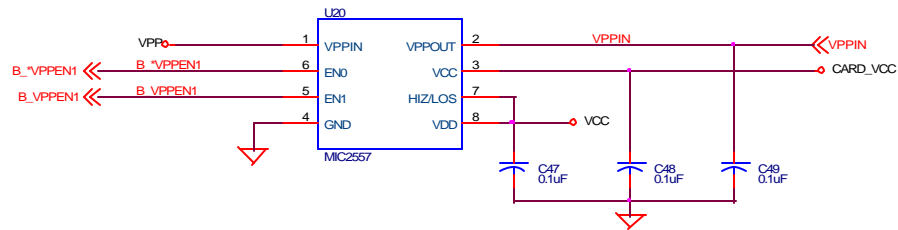
FILE=REF5PG9SCH

| | | |
|--|-----------------------------|---------------|
| VADEM | | |
| Title VG-469 REF #5 DRIVE BAY - BUFFERS | | |
| Size B | Document Number | Rev 1 |
| Date: | Thursday, February 06, 2003 | Sheet 9 of 11 |



These schematics are provided as a design guide only.
Vadem assumes no responsibility for final system design.

| | | |
|--|------------------------------|----------------|
| VADEM | | |
| Title VG-469 REF #5 DRIVE BAY - PCMCIA SLOT B | | |
| Size B | Document Number | Rev 1 |
| Date: | Wednesday, December 08, 1999 | Sheet 10 of 11 |



LOCATE C35 CLOSE TO BOTH U12 AND U13

These schematics are provided as a design guide only. Vadem assumes no responsibility for final system design.

| | | |
|---|-----------------|----------|
| VADEM | | |
| Title VG-469 REF #5 DRIVE BAY - POWER SWITCHES | | |
| Size B | Document Number | Rev 1 |
| Date: Thursday, February 06, 2003 | Sheet 11 | of 11 |