

VG-469

REFERENCE DESIGN #4

TWO SLOT DRIVE BAY IMPLEMENTATION

5V ISA VCC ONLY

EXTERNAL VOLTAGE SENSE

PLUG & PLAY

NO DMA

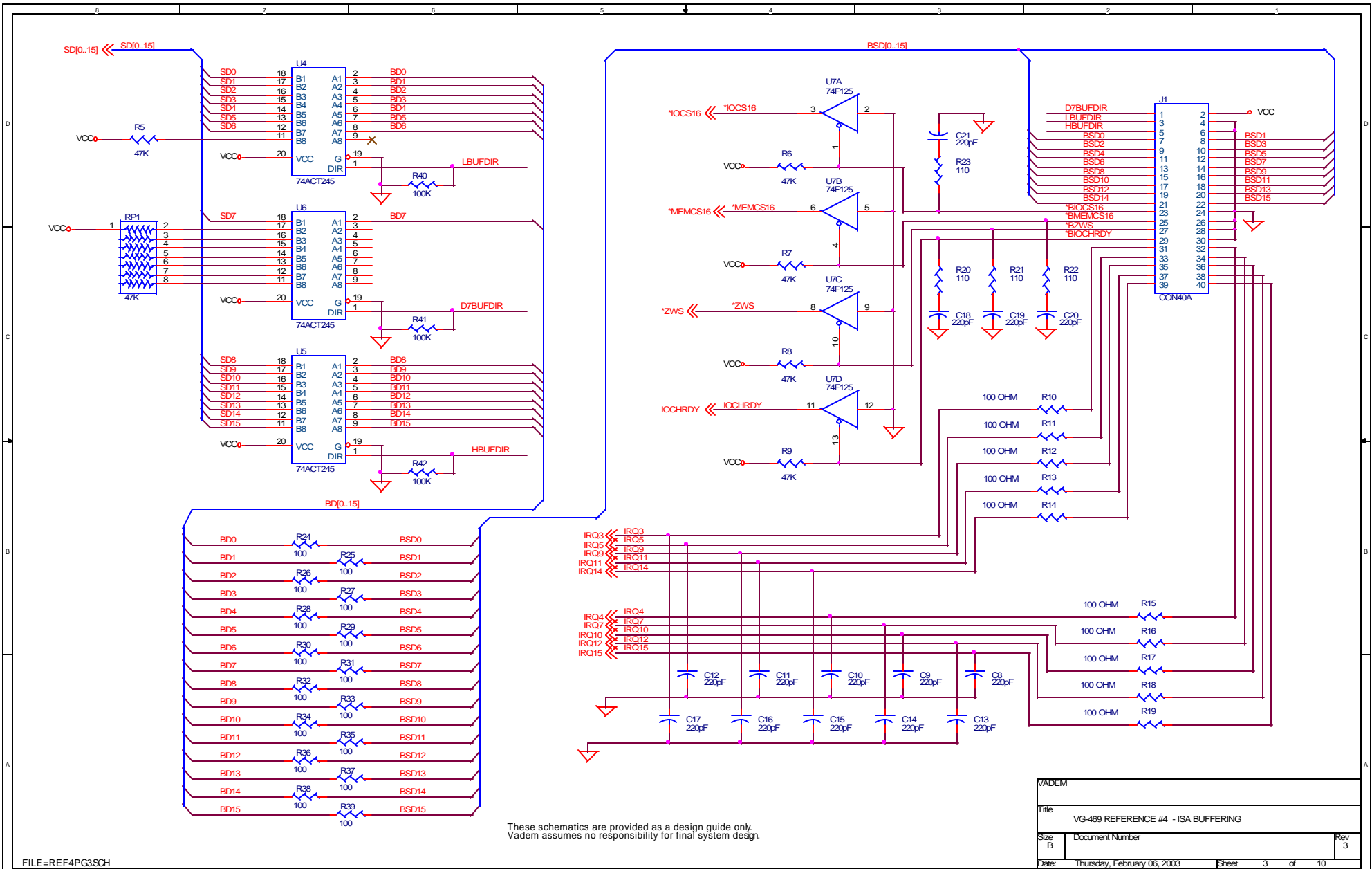
ISA BUFFERS

LINK
REF4PG2SCH
REF4PG3SCH
REF4PG4SCH
REF4PG5SCH
REF4PG6SCH
REF4PG7SCH
REF4PG8SCH
REF4PG9SCH
REF4PG10SCH

These schematics are provided as a design guide only.
Vadem assumes no responsibility for final system design.

FILE=469REF_4SCH

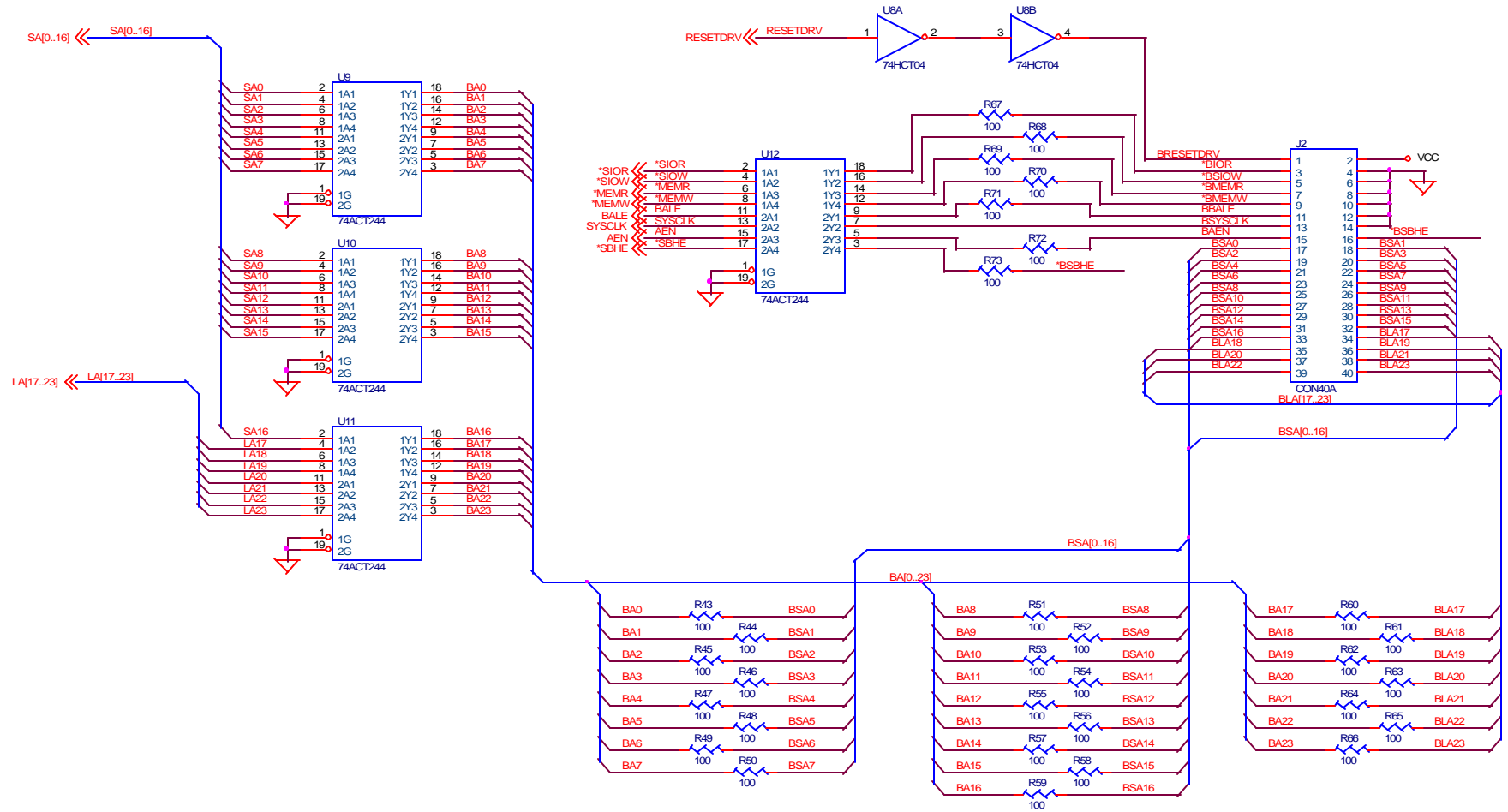
VADEM		
Title VG-469 REFERENCE DESIGN #4 - ISA BUFFER		
Size B	Document Number	Rev 3
Date: Thursday, February 06, 2003	Sheet 1	of 10



These schematics are provided as a design guide only. Vadem assumes no responsibility for final system design.

VADEM		
Title: VG-469 REFERENCE #4 - ISA BUFFERING		
Size: B	Document Number	Rev: 3
Date: Thursday, February 06, 2003	Sheet: 3	of 10

These schematics are provided as a design guide only.
Vadem assumes no responsibility for final system design.



VADEM	
Title VG-469 REFERENCE #4 - ISA BUFFERING	
Size B	Document Number
Date: Thursday, February 06, 2003	Sheet 4 of 10
	Rev 3

VG-469

REFERENCE DESIGN #4

TWO SLOT DRIVE BAY IMPLEMENTATION

EXTERNAL VOLTAGE SENSE

PLUG & PLAY

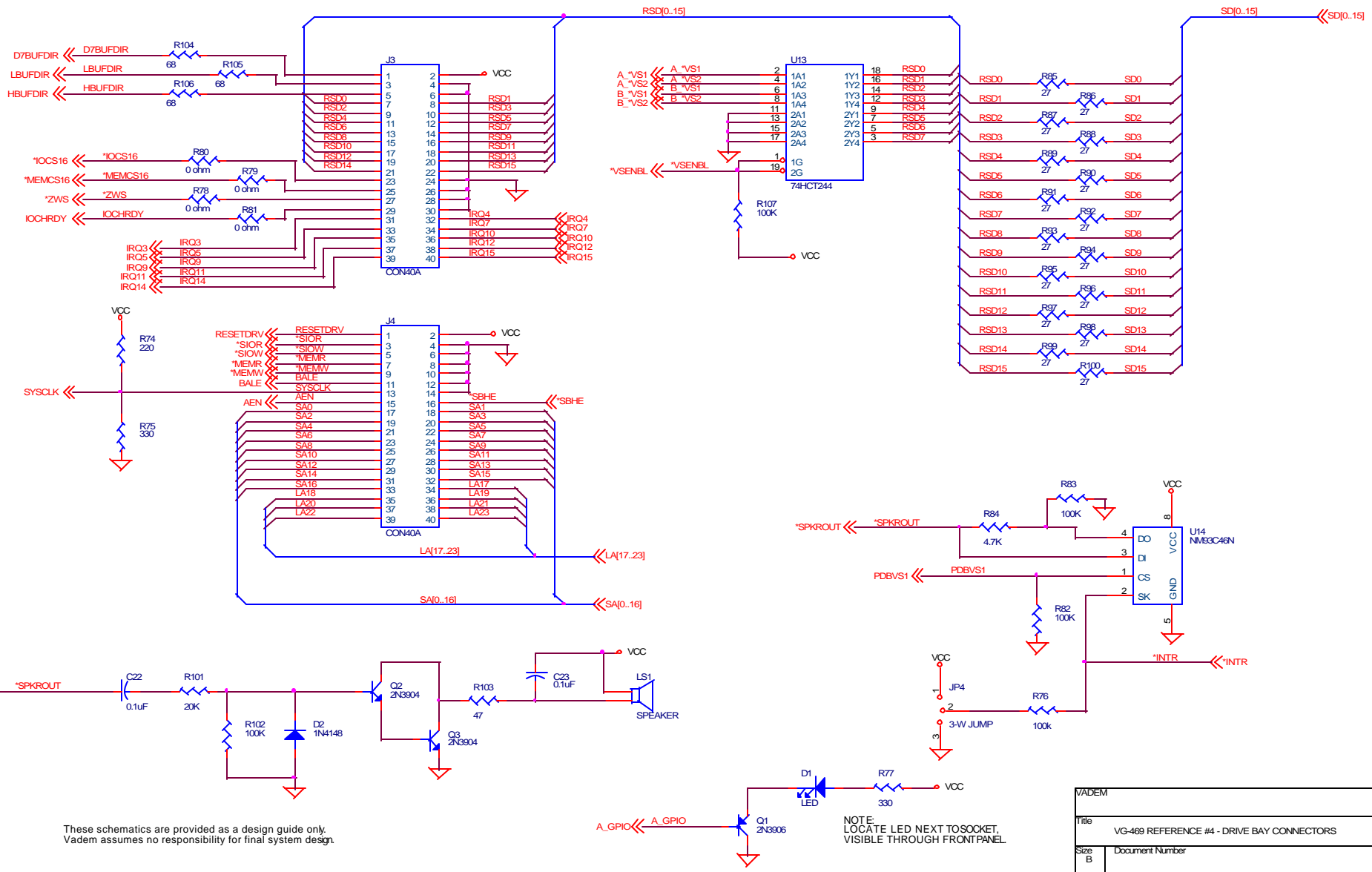
NO DMA

DRIVE BAY

These schematics are provided as a design guide only.
Vadem assumes no responsibility for final system design.

FILE=REF4PG&SCH

VADEM		
Title VG-469 REFERENCE #4 - DRIVE BAY		
Size B	Document Number	Rev 3
Date: Thursday, February 06, 2003	Sheet 5	of 10

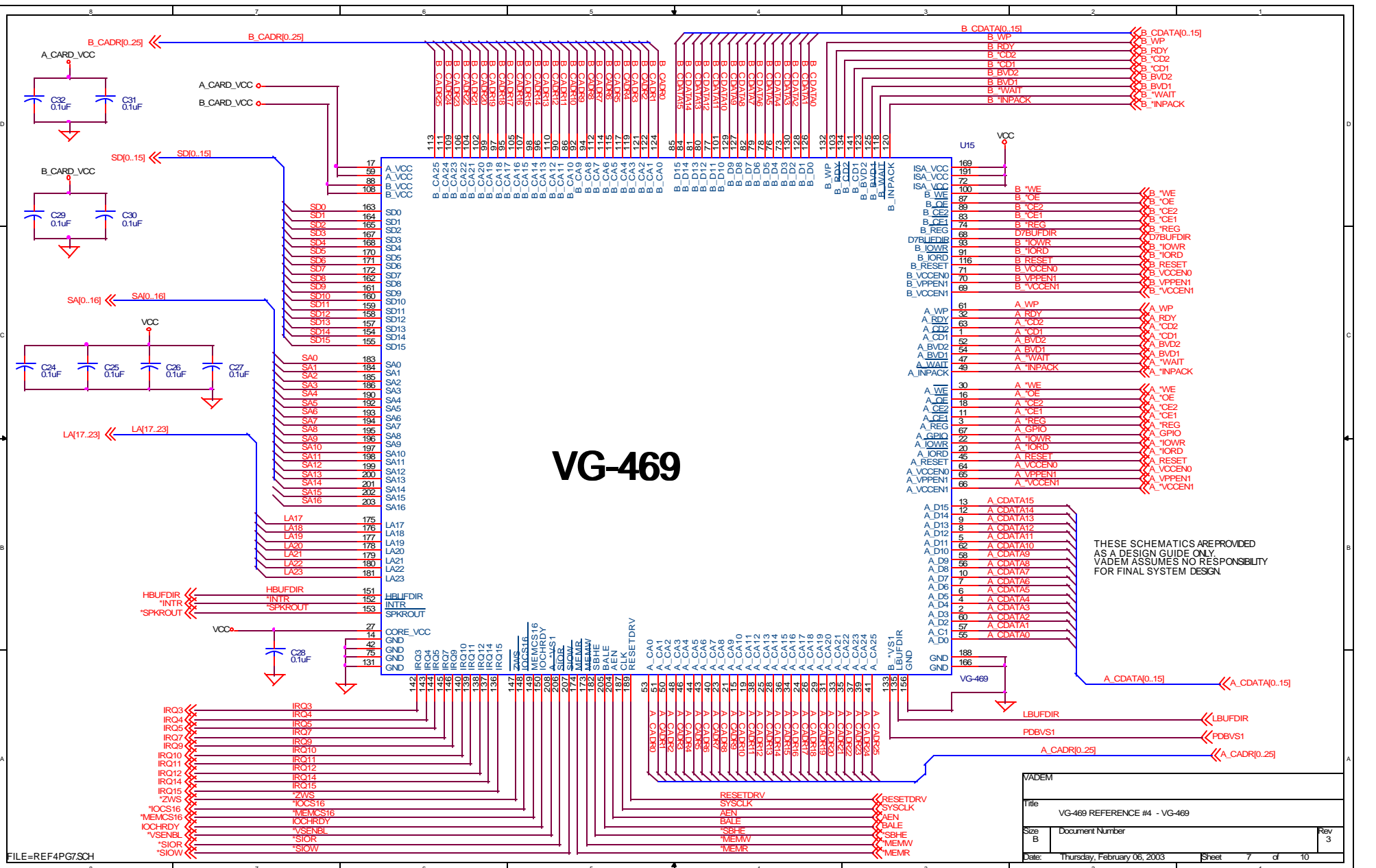


These schematics are provided as a design guide only. Vadem assumes no responsibility for final system design.

NOTE: LOCATE LED NEXT TO SOCKET, VISIBLE THROUGH FRONT PANEL.

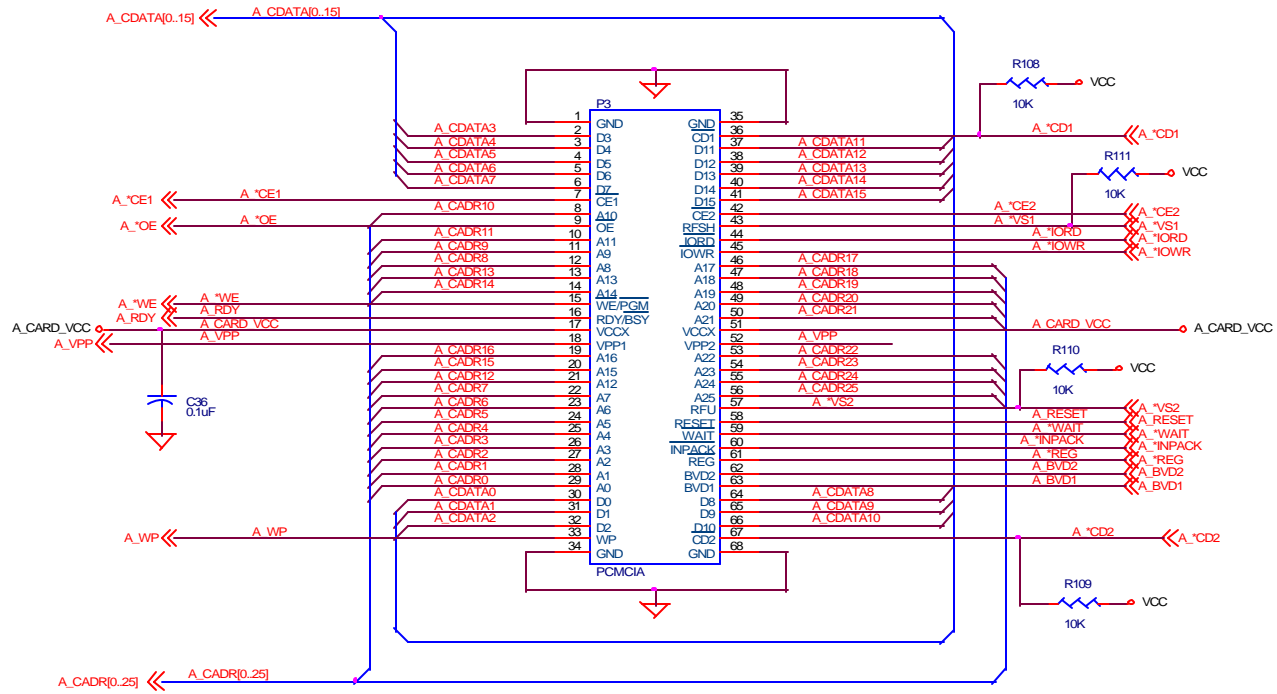
VADEM		
Title: VG-469 REFERENCE #4 - DRIVE BAY CONNECTORS		
Size: B	Document Number	Rev: 3
Date: Thursday, February 06, 2003	Sheet: 6	of 10

VG-469

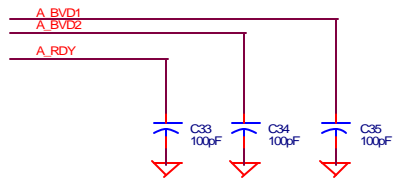


THESE SCHEMATICS ARE PROVIDED AS A DESIGN GUIDE ONLY. VADEM ASSUMES NO RESPONSIBILITY FOR FINAL SYSTEM DESIGN.

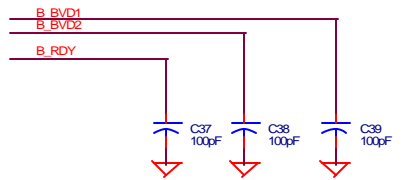
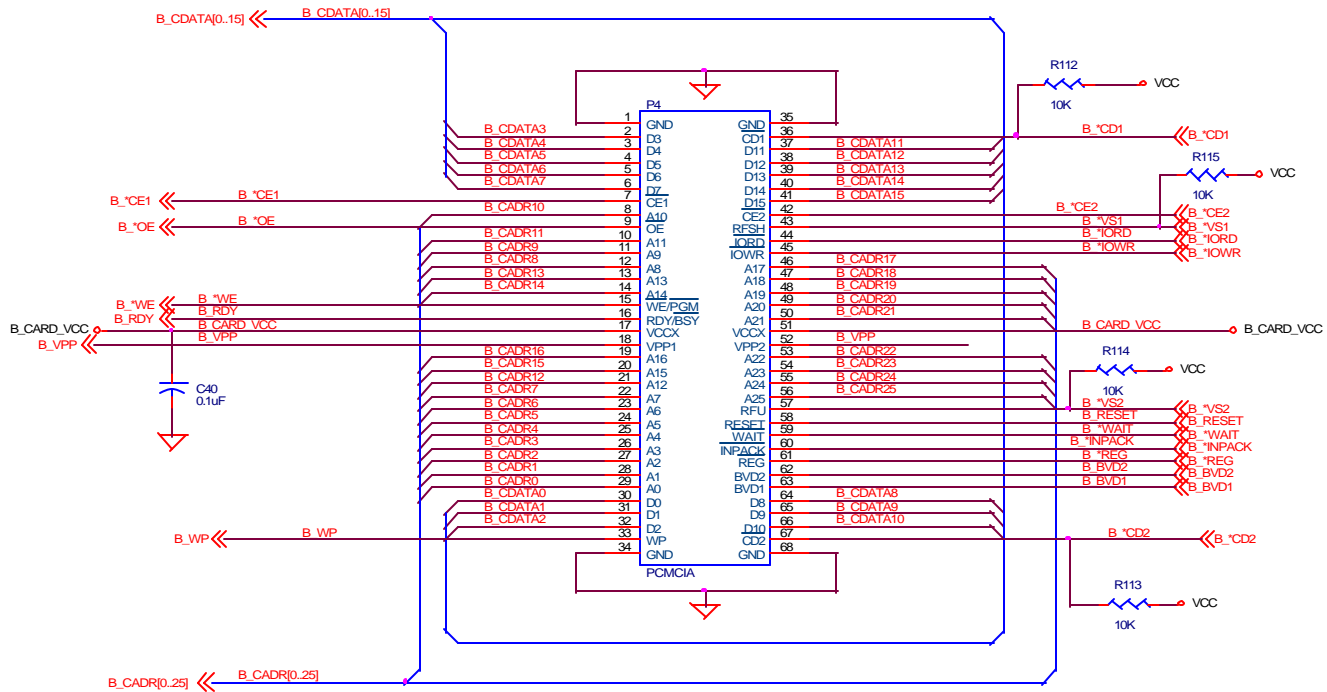
VADEM	
Title: VG-469 REFERENCE #4 - VG-469	
Size: B	Document Number
Date: Thursday, February 06, 2003	Sheet 7 of 10
	Rev 3



These schematics are provided as a design guide only. Vadem assumes no responsibility for final system design.



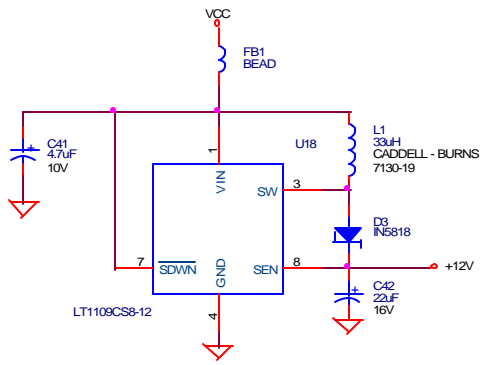
VADEM		
Title: VG-469 REFERENCE #4 - PCMCIA SLOT A		
Size: B	Document Number	Rev: 3
Date: Thursday, February 06, 2003	Sheet: 8	of 10



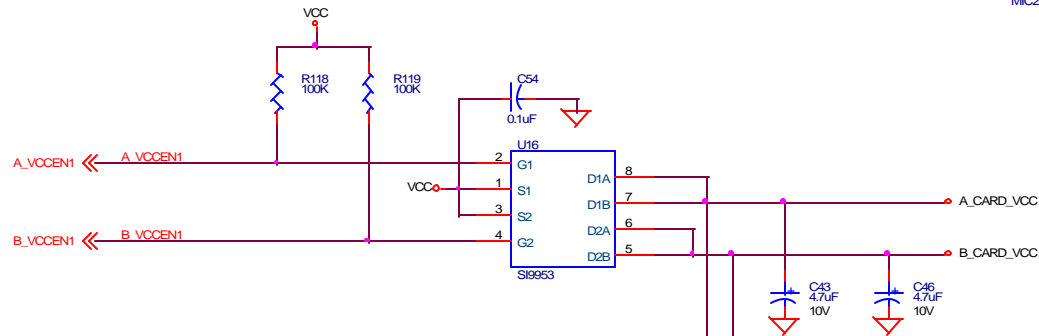
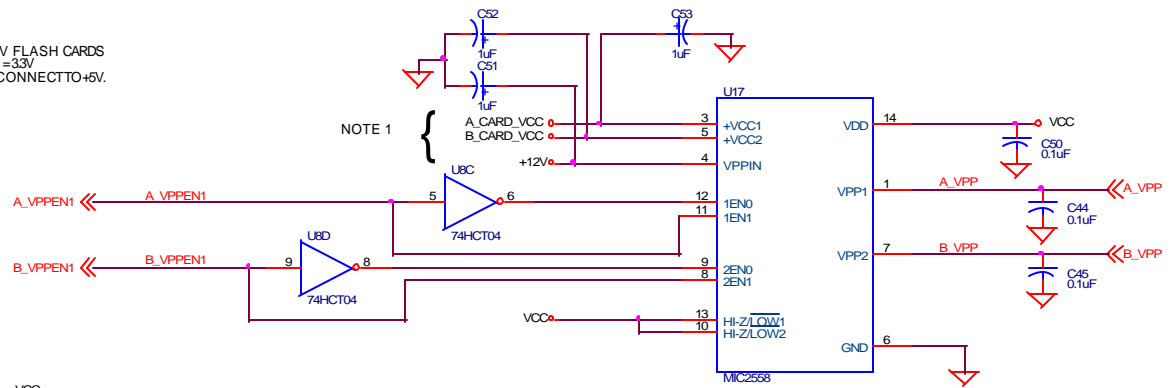
These schematics are provided as a design guide only.
Vadem assumes no responsibility for final system design.

FILE=REF4PC9&SCH

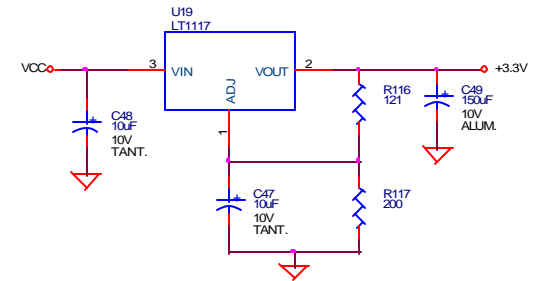
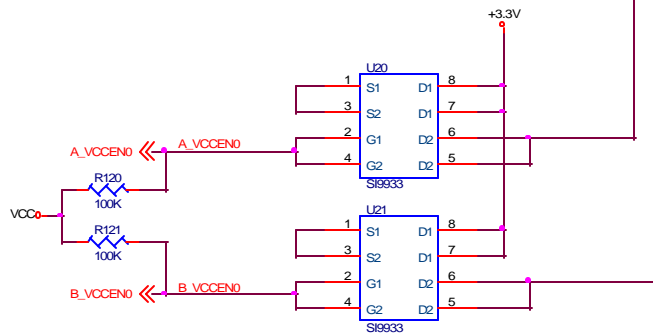
VADEM		
Title VG-469 REFERENCE #4 - PCMCIA SLOT B		
Size B	Document Number	Rev 3
Date:	Thursday, February 06, 2003	Sheet 9 of 10



NOTE:
 1. ASSUMES 3.3V FLASH CARDS
 REQUIRE VPP = 33V
 OTHERWISE, CONNECT TO +5V.



These schematics are provided as a design guide only.
 Vadem assumes no responsibility for final system design.



VADEM		
Title VG-469 REFERENCE #4 - POWER CONTROL		
Size B	Document Number	Rev 3
Date: Thursday, February 06, 2003	Sheet 10	of 10